

# VICTORIA HOUSE

FLOOR PLANS

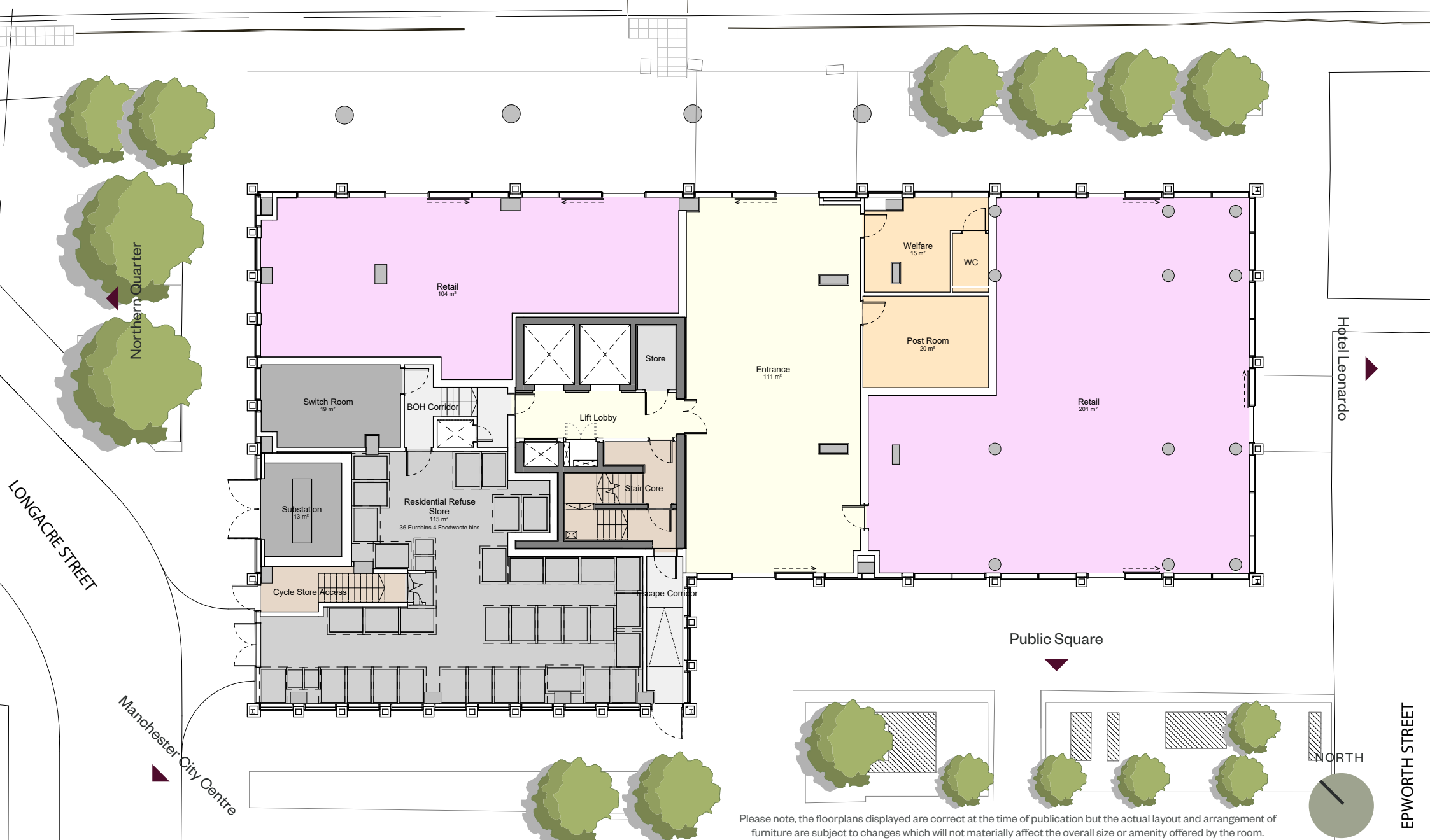
# Ground

GREAT ANCOATS STREET

# VICTORIA HOUSE

Ancoats

New Islington



Hotel Leonardo

LONGACRE STREET

Manchester City Centre

Public Square

EPWORTH STREET



Please note, the floorplans displayed are correct at the time of publication but the actual layout and arrangement of furniture are subject to changes which will not materially affect the overall size or amenity offered by the room.

# Floor 1

# VICTORIA HOUSE

▲  
Ancoats

▲  
New Islington



▲  
Northern Quarter

▲  
Hotel Leonardo

▲  
Manchester City Centre

▼  
Public Square

▲  
NORTH

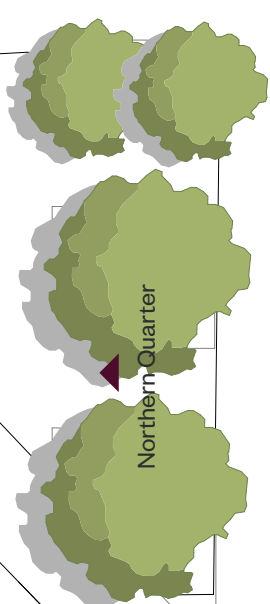
Please note, the floorplans displayed are current at the time of publication but the actual layout and arrangement of furniture are subject to changes which will not materially affect the overall size or amenity offered by the room.

# Floor 2

# VICTORIA HOUSE

▲  
Ancoats

▲  
New Islington



Northern Quarter



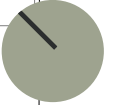
Residential Garden

Public Square

Hotel Leonardo

Manchester City Centre

NORTH



Please note, the floorplans displayed are correct at the time of publication but the actual layout and arrangement of furniture are subject to changes which will not materially affect the overall size or amenity offered by the room.

# Floor 3-8

# VICTORIA HOUSE

▲  
Ancoats

▲  
New Islington

Northern Quarter  
▲

Hotel Leonardo  
▲

Manchester City Centre  
▲



Public Square  
▲

NORTH

Please note, the floorplans displayed are current at the time of publication but the actual layout and arrangement of furniture are subject to changes which will not materially affect the overall size or amenity offered by the room.

# Floor 9-18

# VICTORIA HOUSE

▲  
Ancoats

▲  
New Islington

▲  
Northern Quarter

▲  
Hotel Leonardo

▲  
Manchester City Centre



▲  
Public Square

▲  
NORTH

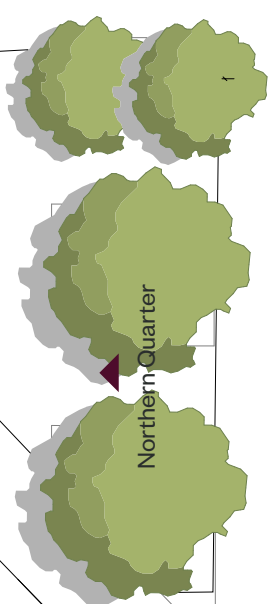
Please note, the floorplans displayed are current at the time of publication but the actual layout and arrangement of furniture are subject to changes which will not materially affect the overall size or amenity offered by the room.

# Floor 19-22

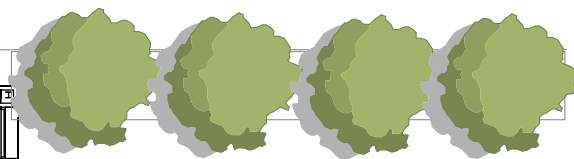
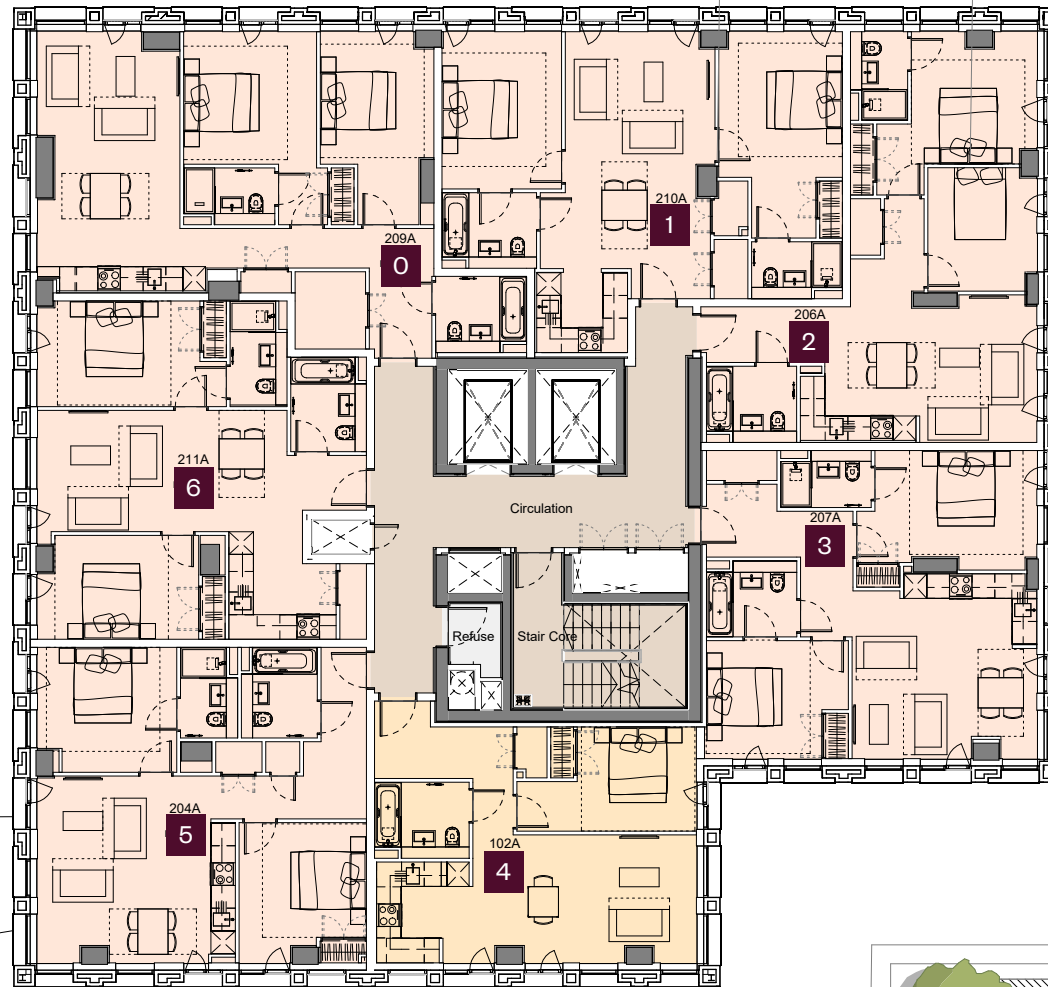
# VICTORIA HOUSE

▲  
Ancoats

▲  
New Islington



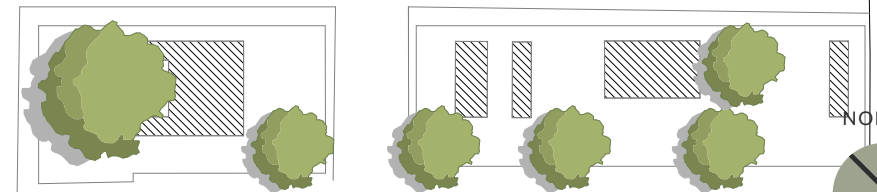
Northern Quarter



Hotel Leonardo

Public Square

Manchester City Centre



NORTH

Please note, the floorplans displayed are current at the time of publication but the actual layout and arrangement of furniture are subject to changes which will not materially affect the overall size or amenity offered by the room.

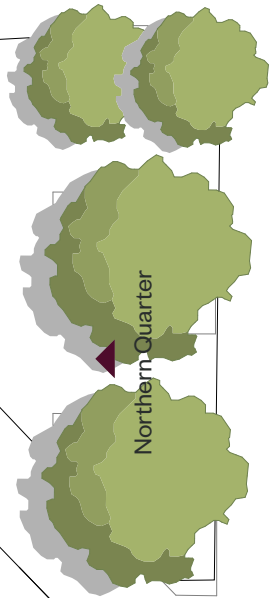
# Floor 23

Lower Penthouse

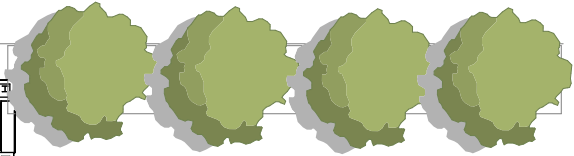
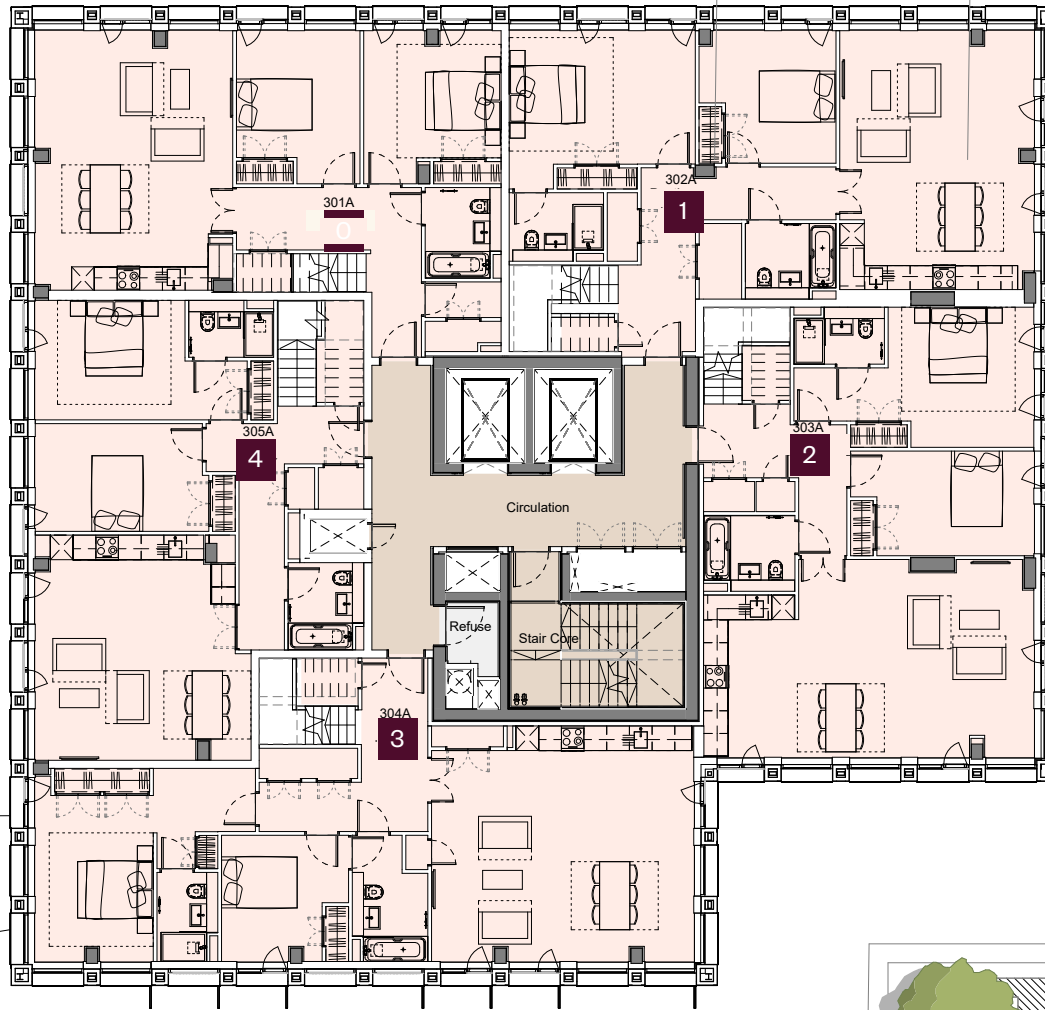
# VICTORIA HOUSE

▲  
Ancoats

▲  
New Islington

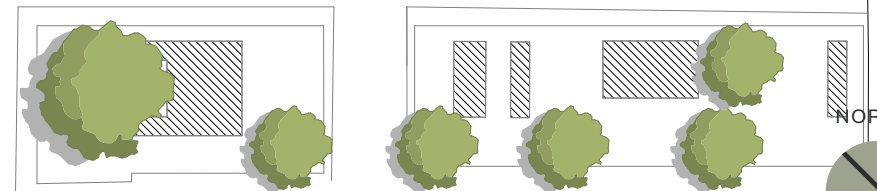


Northern Quarter



Hotel Leonardo

Public Square



NORTH

Manchester City Centre

Please note, the floorplans displayed are correct at the time of publication but the actual layout and arrangement of furniture are subject to changes which will not materially affect the overall size or amenity offered by the room.



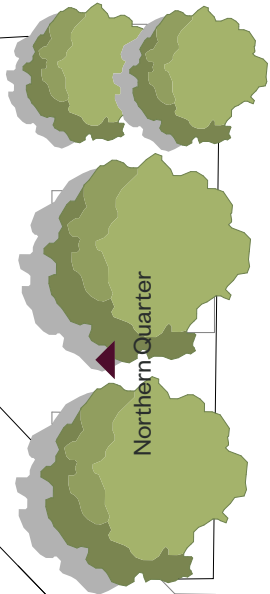
# Floor 24

Upper Penthouse

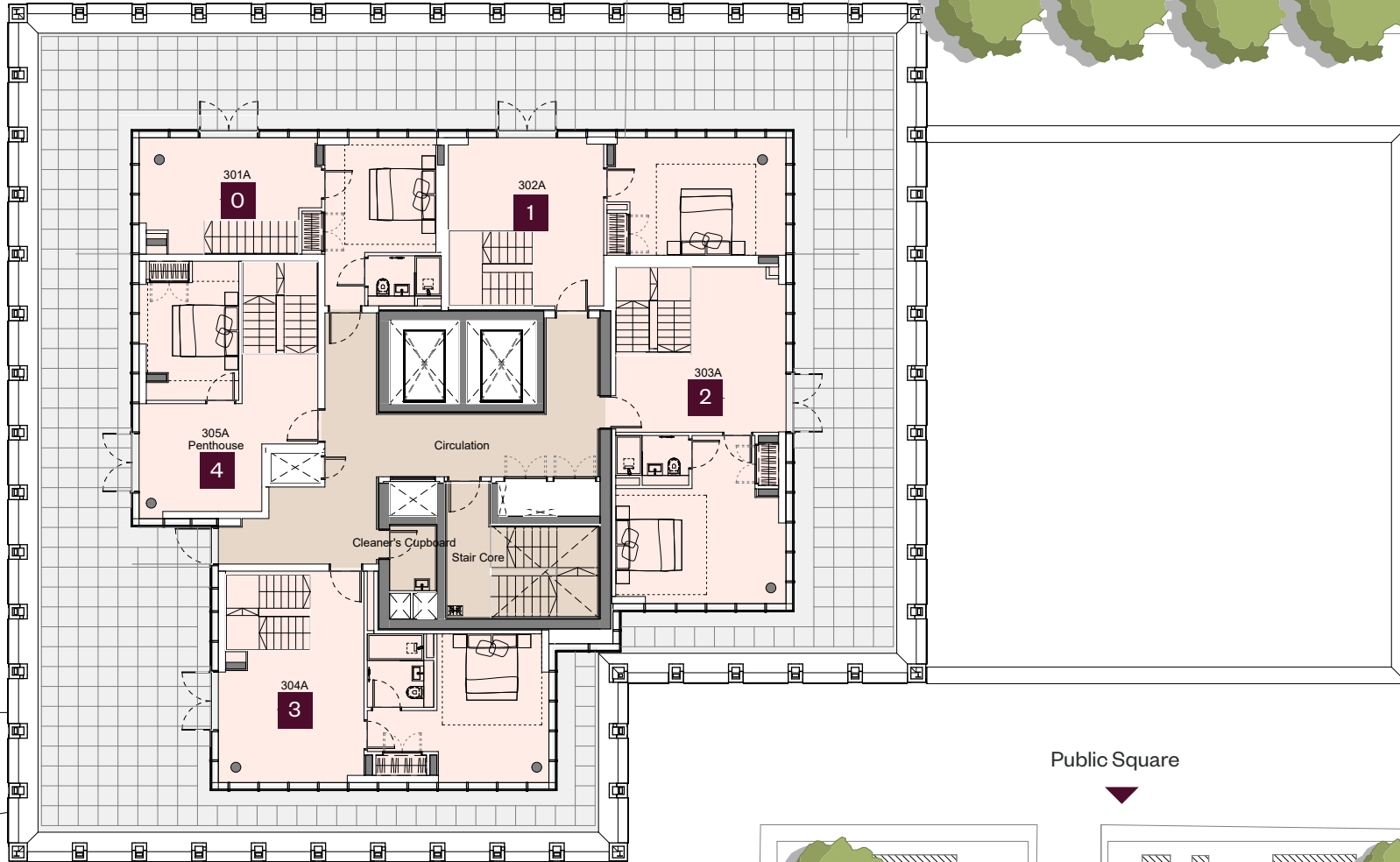
# VICTORIA HOUSE

▲  
Ancoats

▲  
New Islington



Northern Quarter



Hotel Leonardo

Public Square

Manchester City Centre

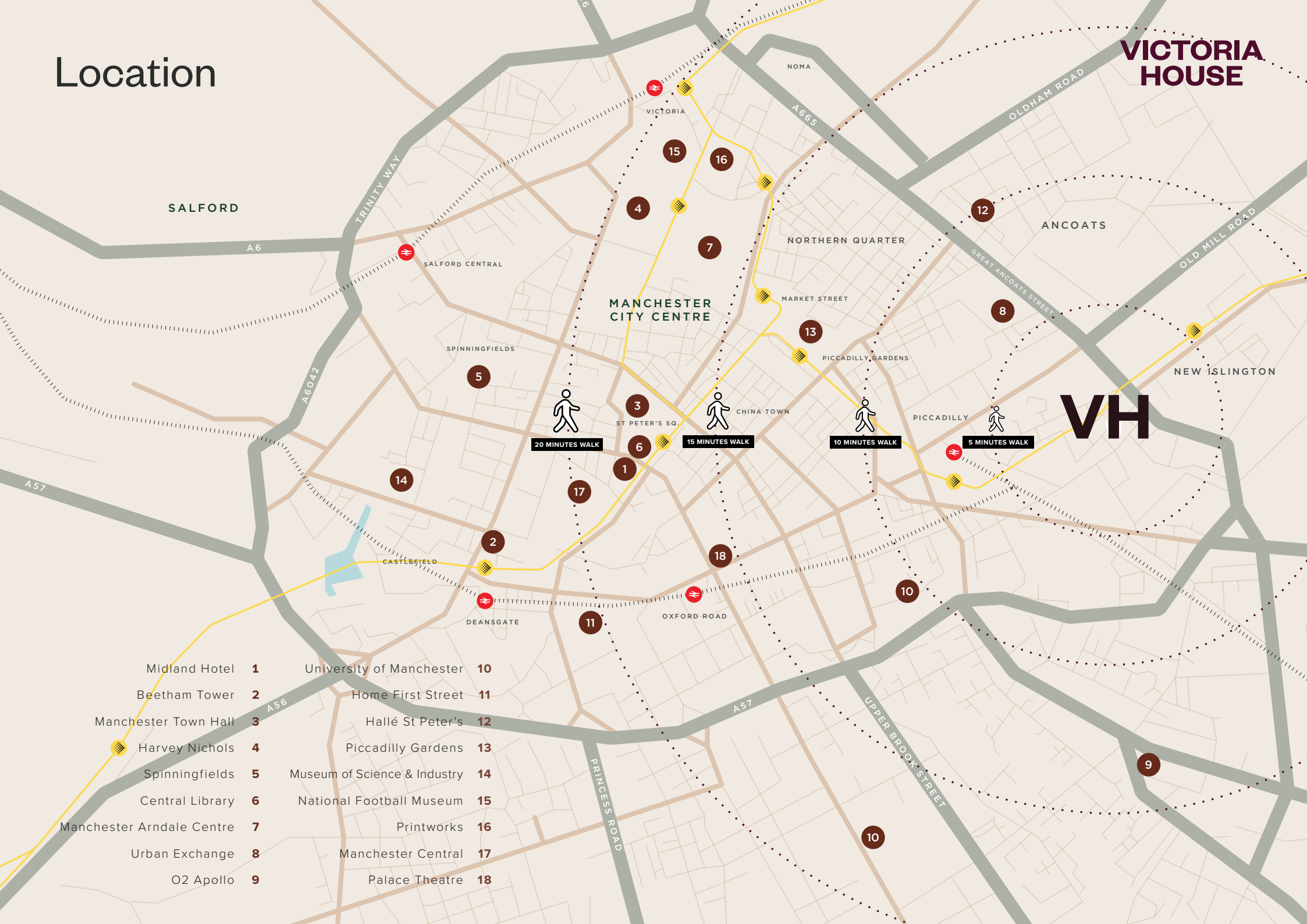
NORTH



Please note, the floorplans displayed are correct at the time of publication but the actual layout and arrangement of furniture are subject to changes which will not materially affect the overall size or amenity offered by the room.

# Location

**VICTORIA HOUSE**



**VH**

- |                           |          |                              |           |
|---------------------------|----------|------------------------------|-----------|
| Midland Hotel             | <b>1</b> | University of Manchester     | <b>10</b> |
| Beetham Tower             | <b>2</b> | Home First Street            | <b>11</b> |
| Manchester Town Hall      | <b>3</b> | Hallé St Peter's             | <b>12</b> |
| Harvey Nichols            | <b>4</b> | Piccadilly Gardens           | <b>13</b> |
| Spinningfields            | <b>5</b> | Museum of Science & Industry | <b>14</b> |
| Central Library           | <b>6</b> | National Football Museum     | <b>15</b> |
| Manchester Arndale Centre | <b>7</b> | Printworks                   | <b>16</b> |
| Urban Exchange            | <b>8</b> | Manchester Central           | <b>17</b> |
| O2 Apollo                 | <b>9</b> | Palace Theatre               | <b>18</b> |

# VICTORIA HOUSE

Joint Venture Development by

 **SALBOY** forshaw.

Please note that the information that we distribute is produced with great care and believed to be correct at the time of printing to the best of our knowledge. Pictures, layouts and other details displayed are given as a general guide and may change from time to time in accordance with the final designs of the development and appropriate planning permissions. We endeavour to ensure that the details we provide are accurate and well researched at all times, however we cannot ultimately warrant the accuracy of that information and cannot be held liable for any reliance you may make of or put on it except as specifically agreed with us in any further agreement we may make with you in writing.